

LEO A DALY

LAMP
RYNEARSON

PADDOCK ROAD ELEMENTARY SCHOOL
DISTRICT 66



November 18, 2024

PADDOCK ROAD ELEMENTARY SCHOOL DESIGN DEVELOPMENT

Summary of DAC and Community Feedback

Phase 2 Goals (Immediate):

- Increase safety, security
- Improve emergency procedures
- Reduce indoor traffic/ increase sense of calm
- Dedicated gym space for P.E. Class
- Dedicated cafeteria space
- Expand special activity capabilities
- Repurpose current EC classrooms
- Ensure a smooth Phase 3 transition



Phase 2 Site Plan

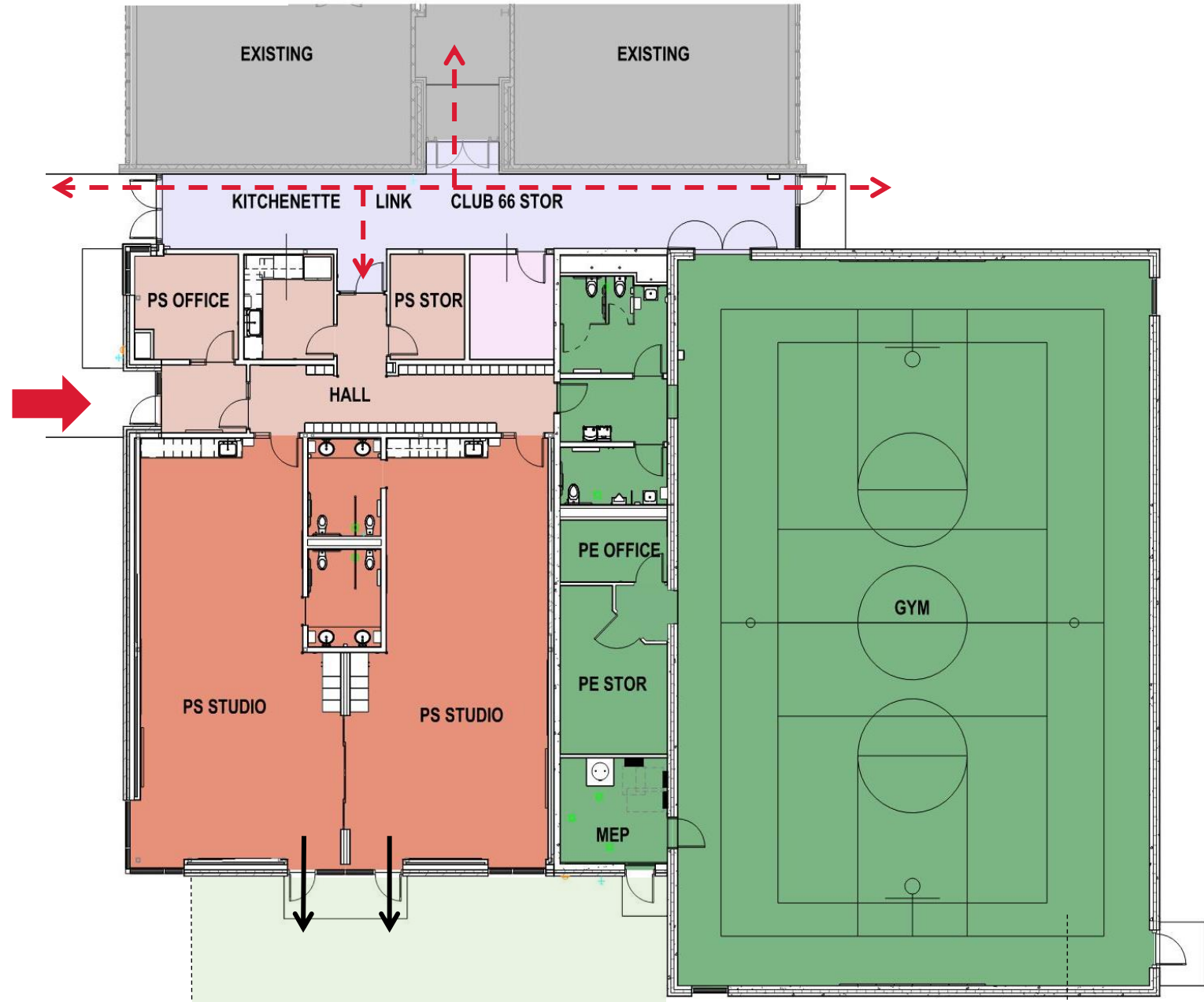
LEGEND

- 1 PHASE 2 BUILDING ADDITION
- 2 BASEBALL FIELD (EXISTING)
- 3 SOCCER FIELD
- 4 EARLY CHILDHOOD PLAYGROUND
- 5 HARD SURFACE PLAY AREA
- 6 NEW PARKING WITH 2-WAY DRIVE AISLE
- 7 RELOCATED DRIVEWAY - 2 ONE-WAY LANES
- 8 EXPANDED DROP-OFF/PICK-UP
- 9 PUBLIC SIDEWALK
- 10 STORMWATER BASIN



Phase 2 Floor Plan

- Link connector
- Dedicated, secure west EC entry
- Storm shelter
- Sliding door between classrooms
- Direct playground access from classrooms



Materiality-- Compose to Complement + Transform

Exterior

- Daylight and views
- Durable
- Low maintenance
- Color, texture, pattern
 - Balance



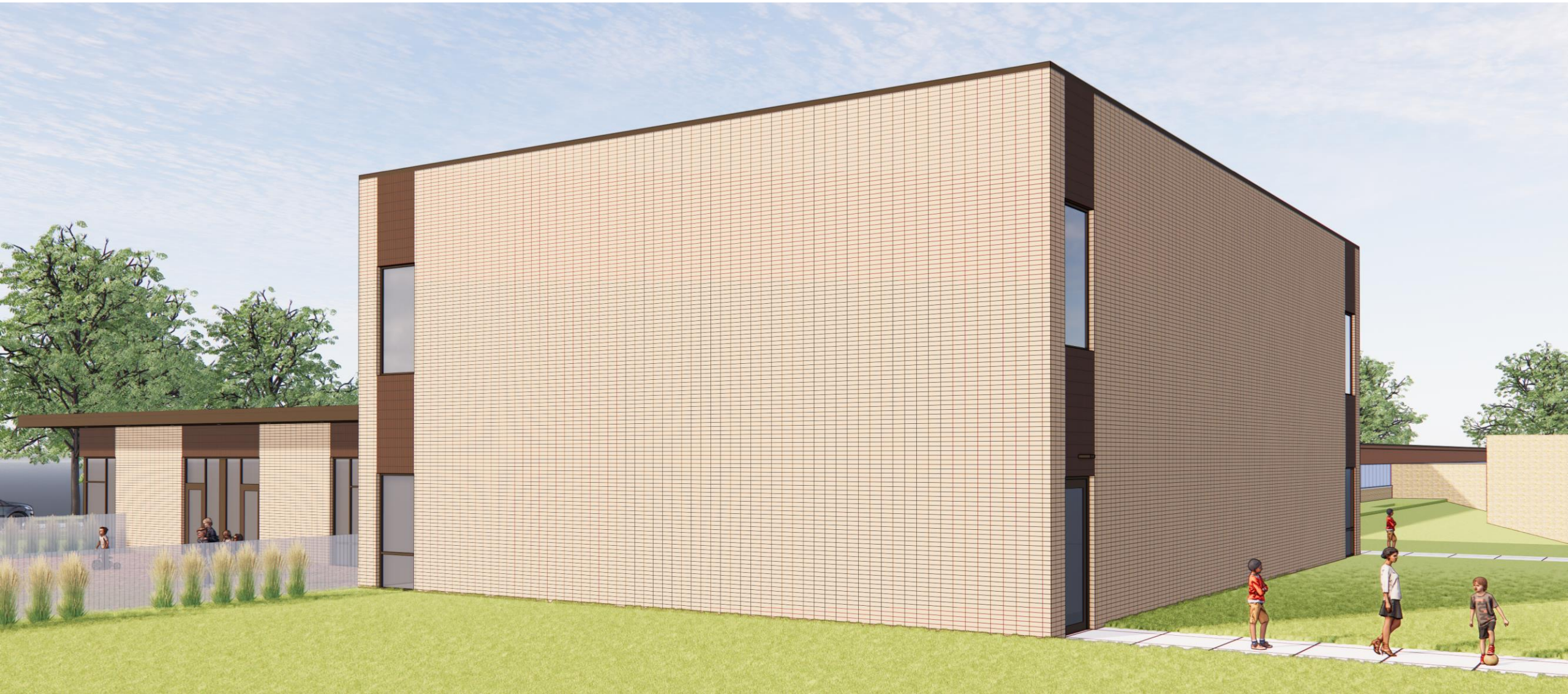
Northwest View



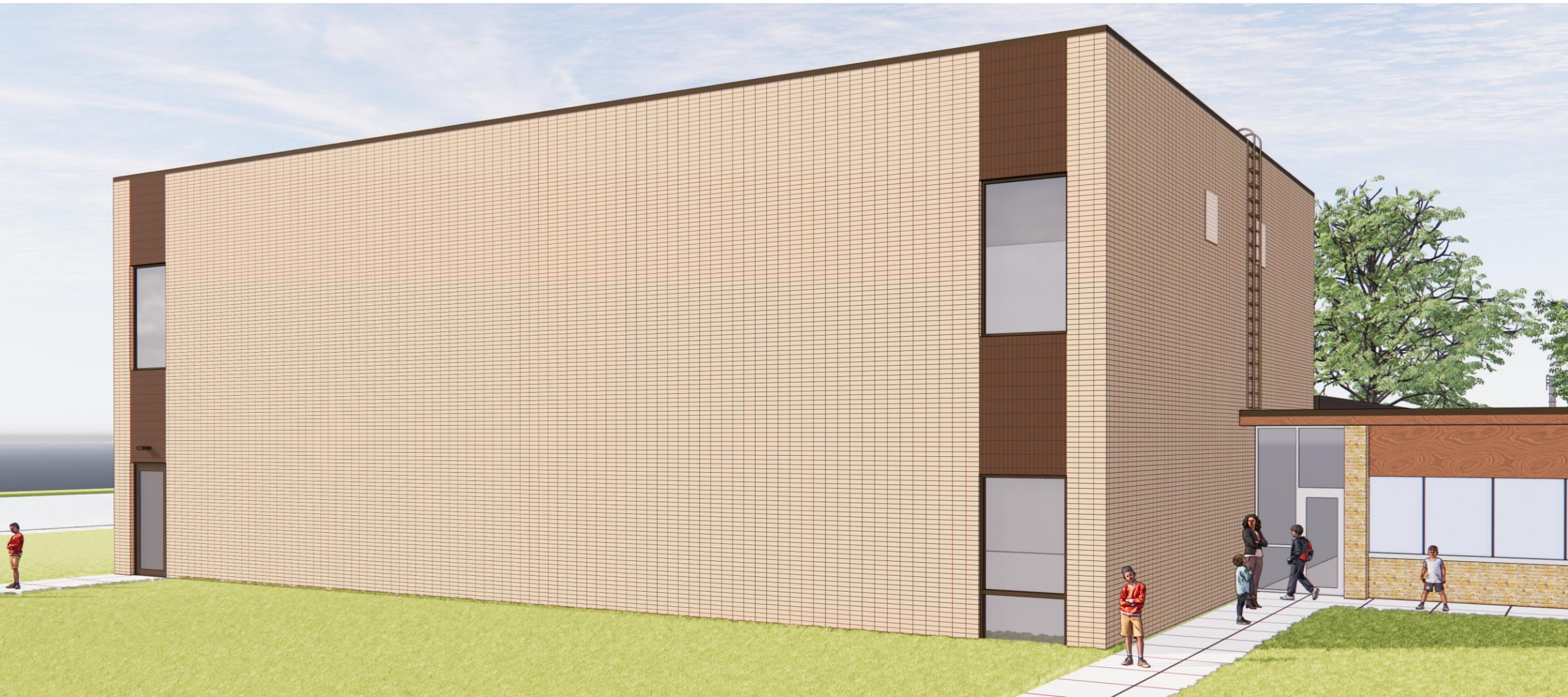
Southwest View



Southeast View



Northeast View



Materiality– Complement Existing + Transform to Freshen Up

Classrooms

- Durable, timeless materials
- Subtle color and pattern to compliment without overwhelming
- Thoughtful pops of natural colors and Westside red



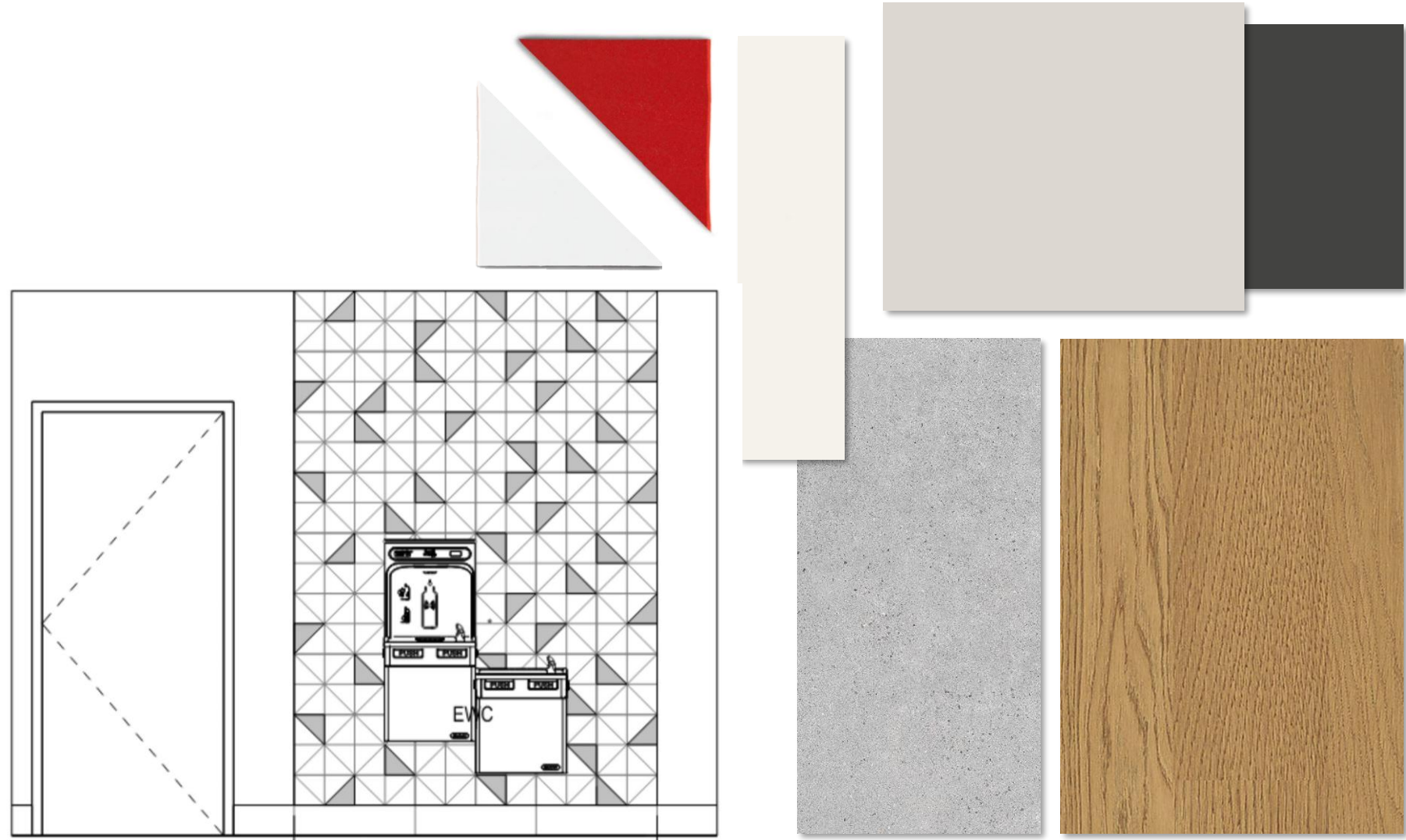
Classroom View



Materiality– Complement Existing + Transform to Freshen Up

Gym

- Durable, timeless materials
- Subtle color and pattern to compliment without overwhelming
- Thoughtful pops of natural colors and Westside red
- Simple geometry motif throughout



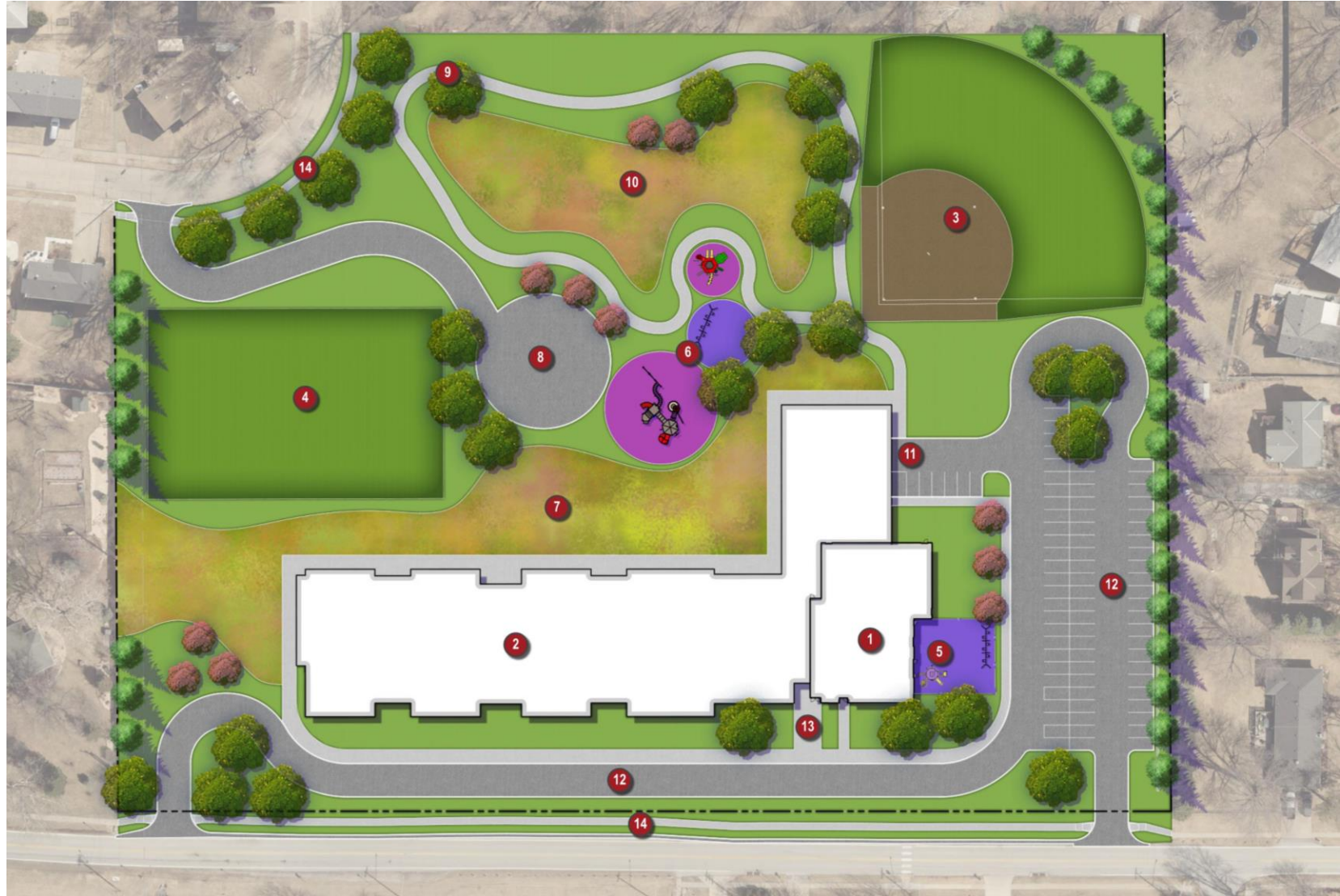
Gym View



Master Plan Site Layout

LEGEND

- 1 PHASE 2 BUILDING ADDITION
- 2 PHASE 3 BUILDING
- 3 BASEBALL FIELD
- 4 SOCCER FIELD
- 5 EARLY CHILDHOOD PLAYGROUND
- 6 ELEMENTARY PLAYGROUND
- 7 LEARNING MEADOW ON SLOPE
- 8 HARD SURFACE PLAY AREA & EMERGENCY VEHICLE ACCESS
- 9 WALKING PATH
- 10 STORMWATER GARDEN
- 11 LOADING DOCK
- 12 DROP-OFF/PICK-UP LANE (APPROX. 800 LF)
- 13 ENTRANCE PLAZA
- 14 PUBLIC SIDEWALK



Master Plan School Test Fit Floor Plan



- Phase 2
- Master Plan
- Fenced EC Play



Next Steps

- November 2024 – Design Development
- City of Omaha Site Plan Review
- December – CMR DD Estimate
- January 2025 – Construction Documents
 - 2 Months Early
- Spring 2025 – Early Procurement
- May 2025 – Start Construction



Design Advisory Committee

Community Meeting

LEO A DALY

LAMP
RYNEARSON

Thank you!

